



Apt 8 102 Napier Street, Sheffield S11 8HD £1,050 PCM

Location: S11, Sheffield
Parking: Allocated parking space included

Be among the first to live in this brand-new residential development, ideally located within the highly sought-after S11 postcode — a rare rental opportunity in one of Sheffield's most desirable neighbourhoods.

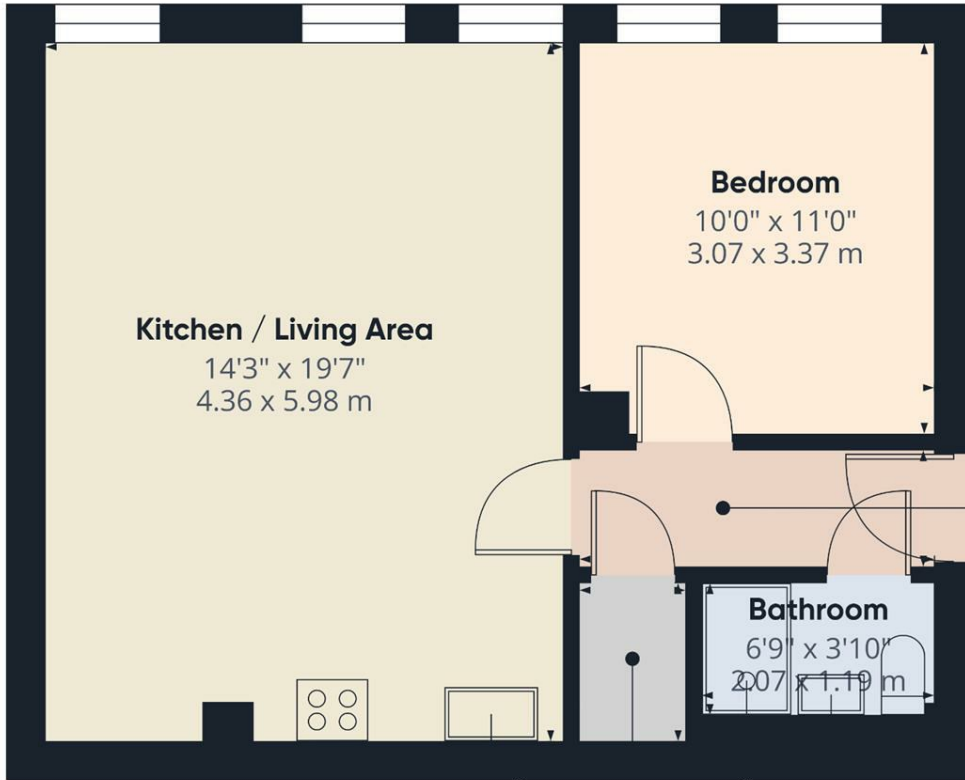
Perfectly positioned just 200 metres from popular local amenities including Waitrose, R1SE Yoga Studio (with ice baths, sauna and a full class timetable), and the premium Nuffield Health fitness centre.

Ecclesall Road is only a short walk away, offering an excellent selection of coffee shops, brunch spots, restaurants and vibrant nightlife. The property also provides easy access to Endcliffe Park and the Peak District, ideal for outdoor enthusiasts and scenic walks.

With excellent transport links to Sheffield City Centre, the Universities and the Train Station, this location combines convenience with lifestyle.

Internally, the apartments feature bespoke Karl Benz kitchens complete with boiling water taps, spacious open-plan living areas with large windows and abundant natural light, king-sized bedrooms, and beautifully finished modern en-suite bathrooms. Every detail has been thoughtfully designed with quality, comfort and style in mind.

These exceptional homes are not to be missed.
Layouts may vary from photographs — viewing is highly recommended.

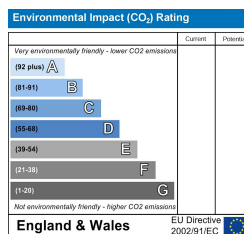
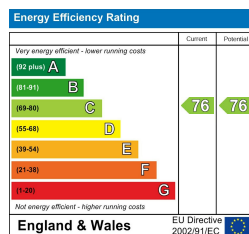


Approximate total area⁽¹⁾
469 ft²
43.6 m²

(1) Excluding balconies and terraces

Calculations reference the RICS IPMS 3C standard. Measurements are approximate and not to scale. This floor plan is intended for illustration only.

GIRAFFE360



Banner Cross
Hathersage
Bakewell
Matlock
www.saxtonmee.co.uk

949-951 Ecclesall Road, Sheffield S11 8TN
3 Bank View, Main Road, Hathersage S32 1BB
Matlock Street, Bakewell DE45 1EE
27 Causeway Lane, Matlock, DE4 3AR

T: 0114 268 3241
T: 01433 650009
T: 01629 815307
T: 01629 828250

E: bannercross@saxtonmee.co.uk
E: hathersage@saxtonmee.co.uk
E: bakewell@saxtonmee.co.uk
E: matlock@saxtonmee.co.uk